

PART OF THE S.E. 1/4, SEC. 30, T.6N., R.1W., S.L.B. & M.

WEST OGDEN ADDITION

BLOCKS 1,6 & 7

TAXING UNIT: 25

24TH

SEE PAGE 17

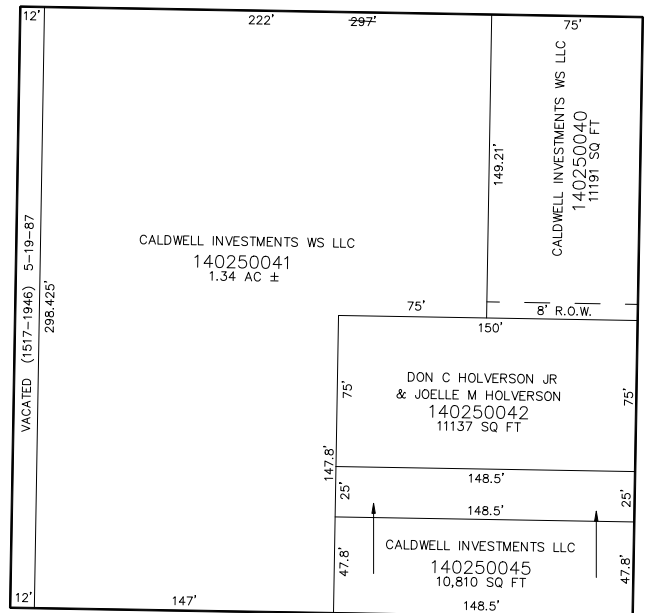
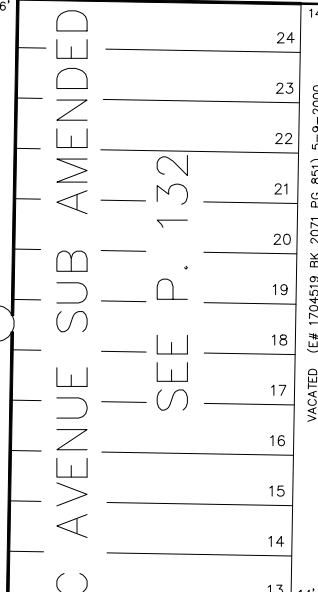
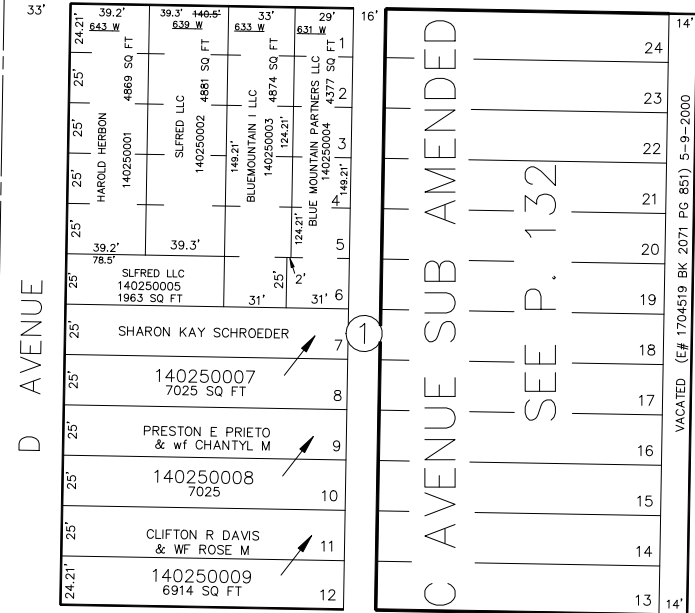
IN OGDEN CITY

SCALE 1" = 50'

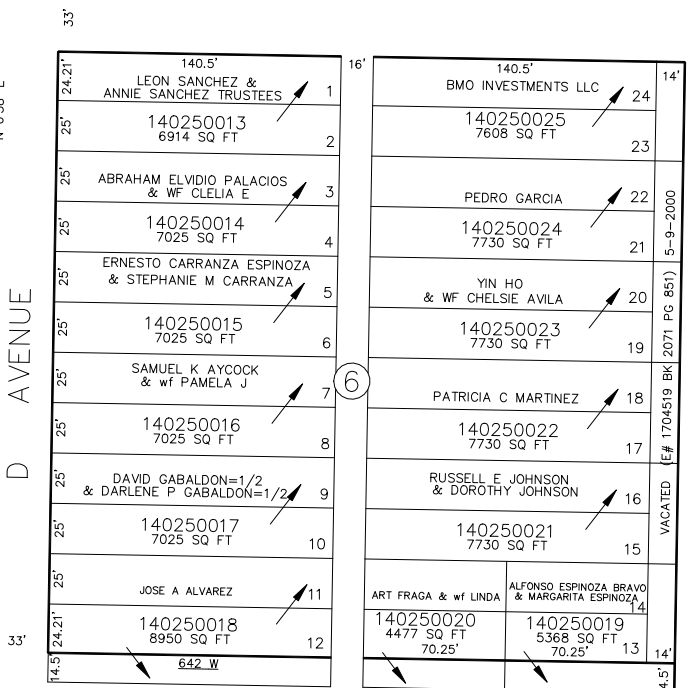
STREET

FOR COMPLETE ENG DATA SEE ORIGINAL DEDICATION PLAT IN BOOK 6, PAGE 18 OF RECORDS.

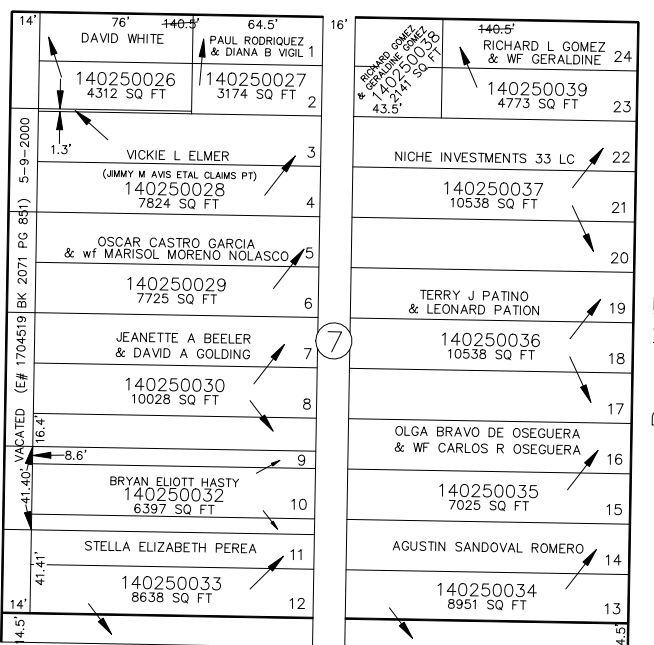
SEE PAGE 26



N 0°58' E



N 0°58' E



SEE PAGE 24